

IMPORTANT PRECAUTIONS

When using electrical appliances, especially when children are present, it is necessary to observe basic precautions.

To avoid electric shock:

- Before cleaning the appliance, disconnect it from the mains.
- Do not use the appliance in the bath or shower, do not drop it into water or other liquids.

Do not touch an electrical appliance that has fallen into the water! Disconnect it from the network immediately.

To avoid burns, fire or injury:

- Use this appliance only for those purposes that described in this operating manual. Do not use devices that are not recommended by the manufacturer.
- Never leave this appliance plugged into the mains unattended.
- When the appliance is used by children or disabled people, careful monitoring of its operation is necessary.
- Never operate the appliance if the cord or plug is damaged.
- Keep the cord away from heated surfaces. Do not pull or bend the cord, and do not wind it on the appliance.
- Do not drop the appliance. Do not insert foreign objects into its holes
- Before using this appliance, make sure that the knives are properly adjusted.

Warranty obligations:

1. The manufacturer guarantees the operation of the product under the conditions of transportation, storage and operation.
2. Warranty obligations apply to all types of damage to the product provably caused by a manufacturing defect.
3. The warranty does not apply to mechanical damage to the product.
4. The warranty period of the product is 12 months from the date of sale.

The warranty does not apply to:

- Products, if malfunctions in them have arisen as a result of a violation rules of operation and transportation.
- Damage caused by excessive loads, improper handling, improper storage or maintenance, improper removal of the knife.
- For components worn out during operation that have a limited service life (POWER CORDS, brushes, plastic leashes, etc.)
- Damage caused by ingestion of foreign objects, substances, insects.
- Self-repair of the product or repair carried out in non-specialized workshops.

The consumer is deprived of the rights to warranty service in the following cases:

- when the warranty period expires;
- in the presence of mechanical damage to the outer parts of the product;
- in case of violation of the rules of operation.

Cleaning, lubrication of products, sharpening of knives after any period of operation are not included in the cost of warranty service.

To perform warranty repairs, you must present documents certifying the purchase of this product, this product instruction with the signature of the seller and the seal of the trading organization.

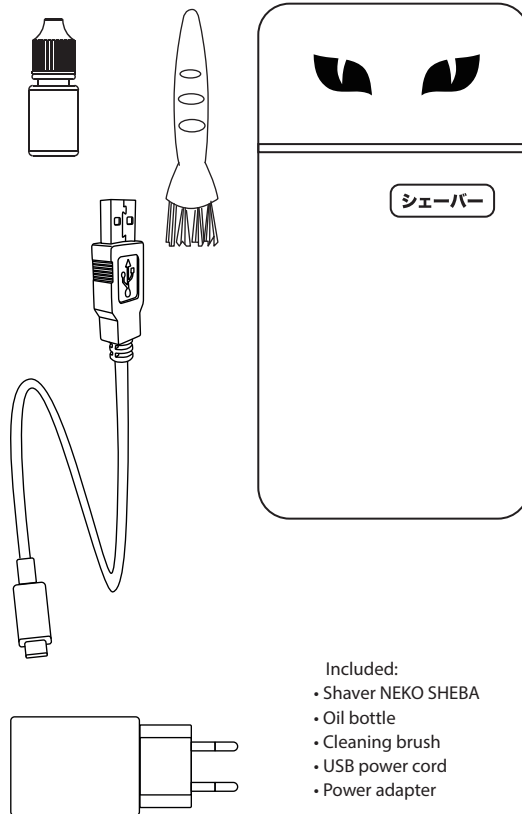
“_____” _____ 20__ y “_____” _____ 20__ y

Seller Signature Seller Signature

place for stamp

place for stamp

NEKO SHEBA



- Included:
- Shaver NEKO SHEBA
 - Oil bottle
 - Cleaning brush
 - USB power cord
 - Power adapter

TECHNICAL SPECIFICATIONS

| | | |
|-------------|--|---|
| Hair Shaver | Motor | Working voltage: 5 W Motor rotation speed: 7500 rpm |
| | Battery | Battery capacity: 800 mAh Charging time: 90 min Working time: 120 min |
| Adapter | Input: 100-240 V, 50-60 Hz Output: 5 V, 1000 MA | |

OPERATIONS MANUAL

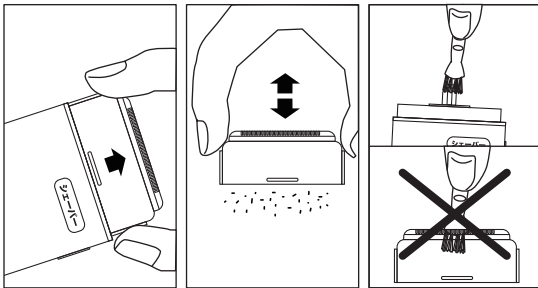
Important!

The beard clipper was not charged by the manufacturer. Please, charge the beard clipper at least 2 hours before the first use for its maximum performance.

To ensure a comfortable shave, the shaver must be cleaned regularly.

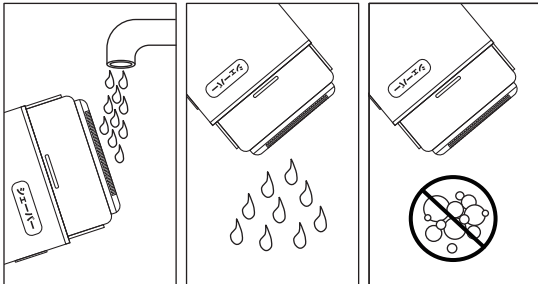
Cleaning the shaver with a brush

1. Remove the shaving head by pulling it towards you.
2. Shake out any remaining bristles.
3. Use a brush to clean the place on the shaving head of the shaver.
Do not clean the shaving head with a brush!



Cleaning the shaver underwater

1. Before cleaning, disconnect the device from the power source.
2. In order to clean, rinse the shaving head parts and the bristle collection area with warm water after each use.
3. After rinsing, shake off any remaining water.
Do not use any detergents.



Important notes

1. Do not disassemble the device yourself.
2. Do not pull the power cord directly when connecting or disconnecting to the power source.
3. Do not charge the device for a long time without supervision. The maximum charging time should not exceed 24 hours.
4. The device contains a built-in rechargeable battery. Please, do not disassemble it, do not throw it into fire, do not charge it or use the device near an open flame or in direct sunlight.
5. Do not insert foreign objects into the device while it is running.
6. Do not repair the device yourself if it malfunctions.

Look out!

1. Please, make sure the device and the razor blades are completely dry before plugging it into an electrical outlet.
2. If the device is damaged and may cause harm to human health, please do not use it until the problem is fixed. If necessary, it should be sent for maintenance.
3. If the power cord or plug is damaged or not working properly, please do not use it.
4. Only after disconnecting the device from the power source can you rinse the blades of the shaving head under water.
5. If the device is not used for a long period of time, charge it at least once every 6 months.